



# ATD-80052

120 LED CORDLESS UNDERHOOD LIGHT



## OPERATING INSTRUCTIONS AND USER CAUTIONS

CAUTION: Before using this product, read this manual and follow all safety rules and operating instructions.

### **FEATURES:**

- 120 SUPER BRIGHT LED'S FOR EXCELLENT AREA ILLUMINATION
- RATCHETING AND TELESCOPING BRACKETS ALLOW PERFECT POSITIONING OF LIGHT
- RATCHETING HOOD BRACKETS TELESCOPE FROM 47" TO 75"
- SOFT, FOAM COVERED ENDS ON TELESCOPING BRACKET ALLOW USE ON HOODS FROM 47" TO 75" WIDE

## **Instructions For Use**

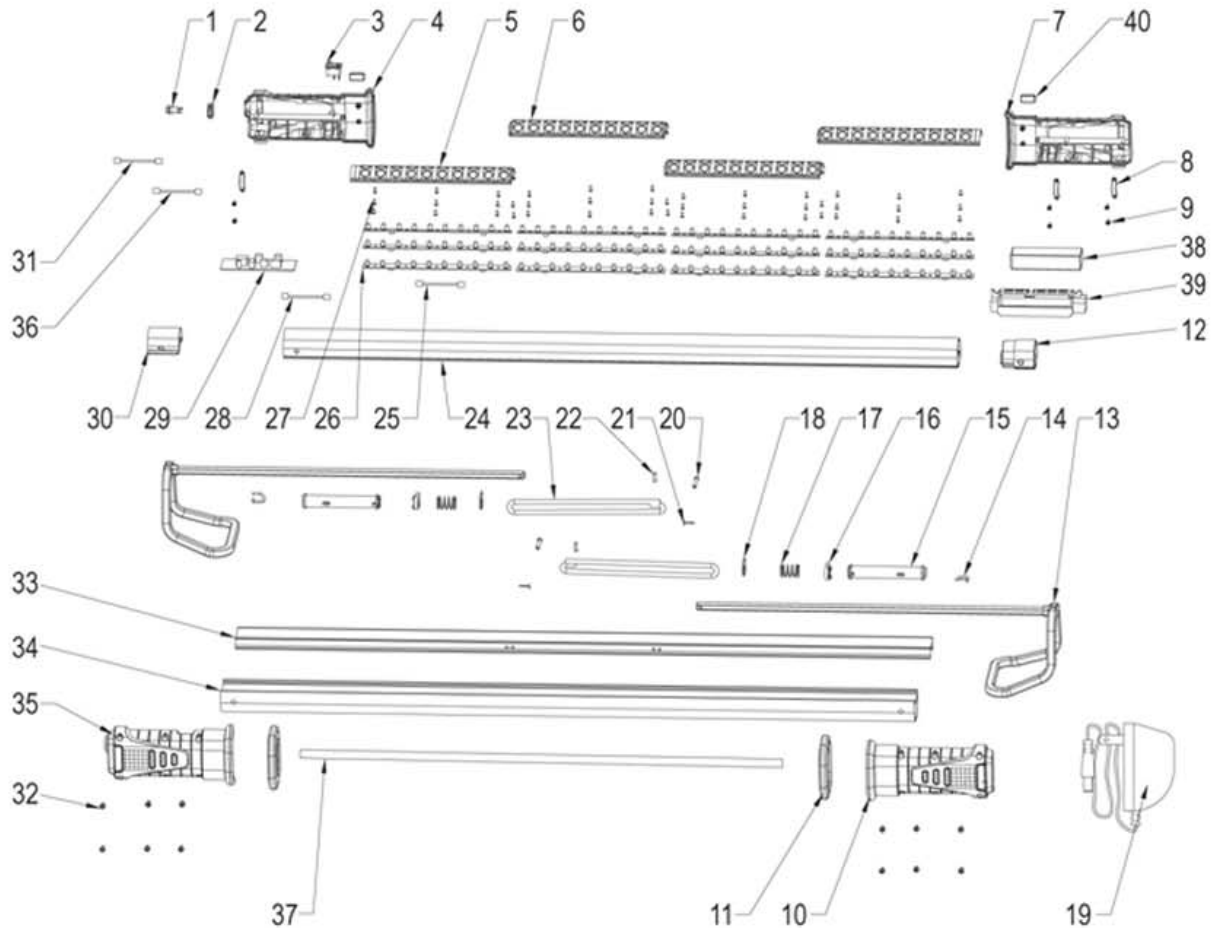
- To use, plug the unit into any 110-120 VAC power source, such as a wall receptacle. Let the unit fully charge until the green indicator on the charger turns on before use.
- Charge this light every month if not in constant use, and after each use if it is used often to insure longevity.
- Press the on/off switch (I) to turn unit on, press the other side of switch (O) to turn it off.
- The hooks can be adjusted by simply pulling out on them and affixing to whatever surface you like, such as a car hood. (Up to 75" wide)
- Once your light is in place, it can be rotated to the desired position by simply twisting the light. You will hear ratcheting "clicks" as you rotate it.

## **Cautions**

- For indoor use only - don't use in or around, tubs, showers, sinks, pools, hot tubs, or in a wet environment
- Use only the recommended voltage and frequency requirements
- Do not move or turn off light by pulling the power cord
- Do not use if the cords or clear tube are damaged
- Keep out of reach of children
- Do not operate light with wet hands.
- Keep lamp away from hot objects.

# ATD

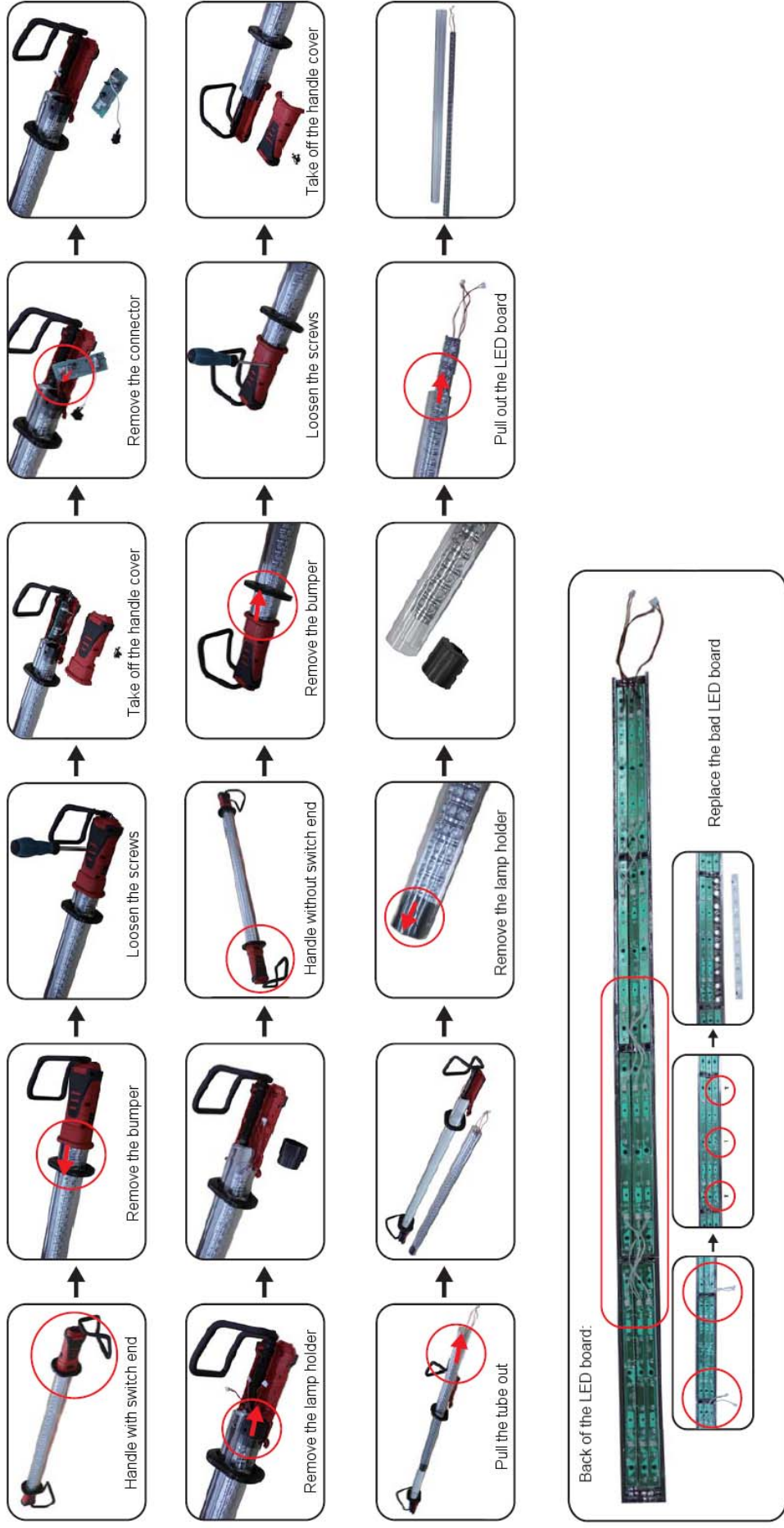
## ATD-80052



ITEM#	ORDERING PART#	PART DESCRIPTION
1	PRT80052-01	DC SOCKET
2	PRT80052-02	DC SOCKET BOARD
3	PRT80050-30	SWITCH
4	PRT80050-01-02	HANDLE SET
5	PRT80051-05	REFLECTOR LONG
6	PRT80051-06	REFLECTOR SHORT
7	PRT80050-03-04	HANDLE SET
8	PRT80050-07	FIXING RING
9	PRT80050-25	SCREW 2.5X10
10	PRT80050-03-04	HANDLE SET
11	PRT80050-11	PROTECTIVE COVER
12	PRT80051-12	LAMP HOLDER
13	PRT80050-15	PULL ROD
14	PRT80050-19	HOOK
15	PRT80050-05	SWIVEL SHAFT
16	PRT80050-06	POSITION BLOCK
17	PRT80050-16	PRESSURE SPRING
18	PRT80050-18	BLOCK
19	PRT80052-19	CHARGER
20	PRT80050-26	ROLL PIN

ITEM#	ORDERING PART#	PART DESCRIPTION
21	PRT80050-27	COTTER PIN
22	PRT80050-22	TIE WIRE
23	PRT80050-17	ELASTIC BAND
24	PRT80051-24	DOWN PC TUBE
25	PRT80051-25	WIRE HARNESS ASSEMBLY
26	PRT80051-26	LED BOARD
27	PRT80051-27	SCREW 2.5X6
28	PRT80051-28	WIRE HARNESS ASSEMBLY
29	PRT80051-29	PCB
30	PRT80051-30	LAMP HOLDER, POWER CORD END
31	PRT80051-31	WIRE HARNESS ASSEMBLY
32	PRT80050-24	SCREW 3X14
33	PRT80050-14	INSERT
34	PRT80050-12	CLEAR TUBE
35	PRT80050-01-02	HANDLE SET
36	PRT80052-36	WIRE HARNESS ASSEMBLY
37	PRT80052-37	LABEL
38	PRT80052-38	LI-POLY BATTERY
39	PRT80052-39	BATTERY BOX
40	PRT80052-40	LABEL

# REPLACING THE LED BOARD - ATD80051/ATD80052



Assembly is the reverse of disassembly